

Customer :

customer

Customer part :

customer part

Comment :

Comment

S1=6.21

S2=6.44

Tmax=453

Tp S2=492.0

PI=0.49

HI=112

Sample =1772.80

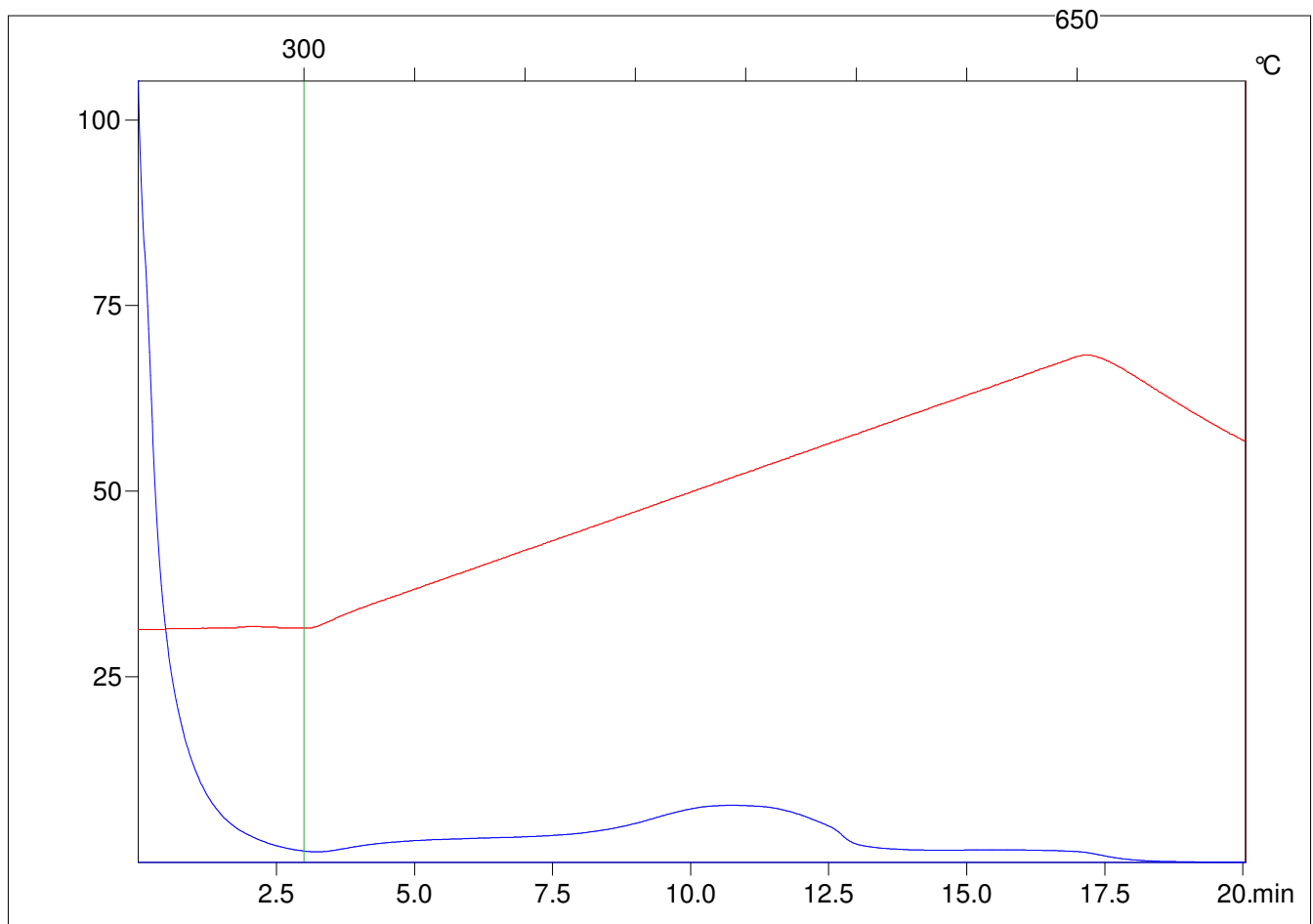
Method =Bulk Rock

Cycle=Basic

KFID(10*9)=1444

Qty =70.3

TOC=5.75



C:\VINC\PK3_1792\PK049.R00 : FID pyrolysis graphic

State

Pyro Status

Oxi Status